



TAURULIFT T 144H



www.ausa.com

AUSA Center, S.L. ● Ctra. de Vic, Km 2.8 - P.O.B. 194, 08243 Manresa - BARCELONA (ESPAÑA) Tel.: +34 93 874 73 11 E-mail: ausa@ausa.com



AUSA Madrid ● Pol. Ind. Coslada-Marconi 15-17, 28823 Coslada - MADRID (ESPAÑA) Tel.: +34 91 669 00 06 E-mail: ausa.madrid@ausa.com

AUSA France ● Z. I. Saint Charles-Rue de Zürich, 66000 PERPIGNAN (FRANCE) Tel.: +33 (0) 4 68 54 38 97 E-mail: ausa.france@ausa.com

AUSA Verkauf & Service Deutschland ● Heinrich-Welken-Str. 5, 59069 HAMM-RHYERN (GERMANY) Tel.: +49 (0) 2385-9359362 E-mail: info@ausa.de

BEIJING Rep. office ● Address Room 527, HengXiang Building, Tuanjiehu Nanli, Chaoyang District. - Beijing 100026 CHINA

Tel.: 86-10-8597 1983 - Fax: 86-10-8597 1993 - E-mail: ausa.china@ausa.com

AUSA UK ● Sales: 07970639988 E-mail: ausa.uk@ausa.com

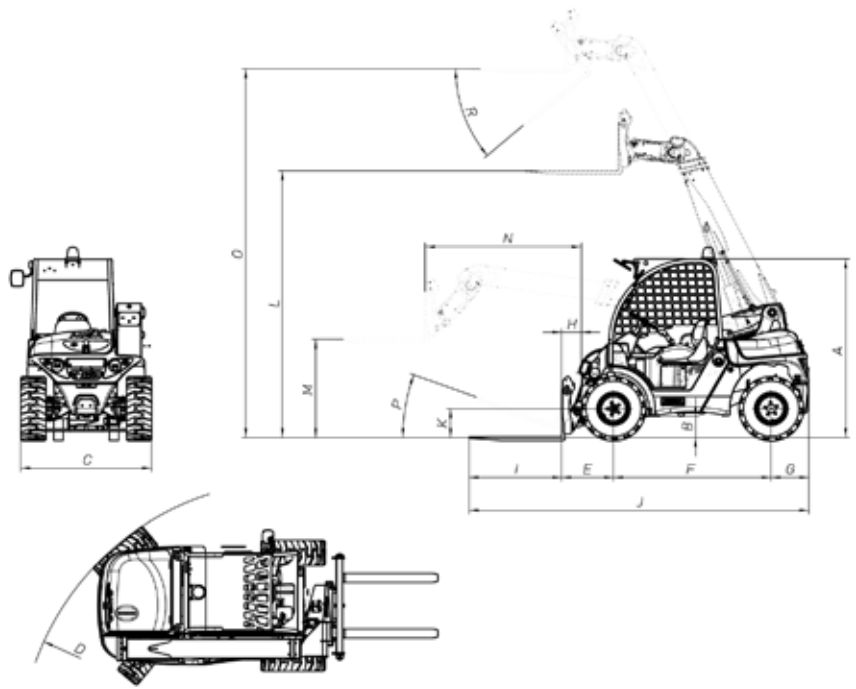
AUSA Northamerica Corp. ● E-mail: ausa.corp@ausa.com

(Sede central AUSA-Manresa)

T 144 H

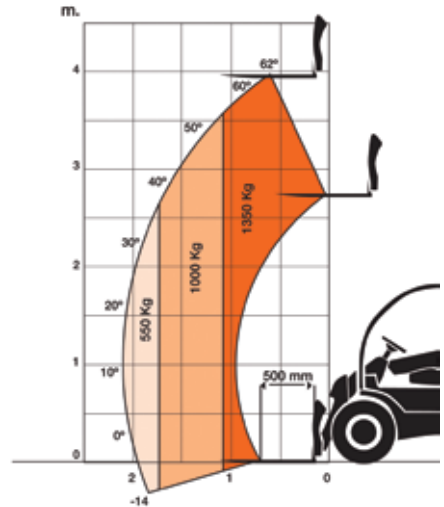
AUSA
www.ausa.com

DIMENSIONS (mm)		T 144 H
A		1950
B		226
C		1410
D		2950
E		559
F		1700
G		406
H		211
I		1000
J		3665
K		310
L		2877
M		1057
N		1682
O		3976
P		20°
R		40°



TECHNICAL SPECIFICATIONS

		T 144 H
Load capacity	Max. load	1.350 Kg (1.250 Kg with Side shift)
	Load at max. height	1.350 Kg (1.250 Kg with Side shift)
Lifting height	Maximum lifting height	3.990 mm
	Lifting height at max. load	3.990 mm
Reach	Max reach	2.180 mm
	Capacity at max reach	550 Kg (450 Kg with Side shift)
Unload weight		2.400 Kg
Engine	Diesel	Kubota V-1505
	Power / rpm (DIN 70020)	22.7 Kw / 30.8 CV (2600 rpm)
	Torque	93.9 Nm @ 1700 rpm
	N° of cylinders	4
	Cooling system	Water
Traction		4x4
Transmission		Hidrostatic
Clutch		No
Engine starting system		Electric
Speed		20 Km/h
Axles		AUSA
Gradient negotiable (with full load)		23%
Hydraulic circuit	Working pressure	240 bar
	Tyres	
Tyres	Front	27x10 - 12
	Rear	27x10 - 12
External turning circle		2.930 mm
Steering		Hydraulic
Tank capacity	Fuel	55 l
	Hydraulic fluid	32 l
Service brake		Hydrostatic retardation system
Parking brake		Mechanically applied hydraulically released inside the hydrostatic motor



STANDARD EQUIPMENT

- Antivandalic system
- Ergonomic seat with seat belt
- Joystick with "total control" of movements
- Homologated ROPS-FOPS cabin
- Rotating beacon
- Rear view mirror
- Audible reverse warning
- Power take off with quick coupler
- Passive security system:
- Visual and acoustic Tipping / Engine start lock with hand brake activated
- Control arm lock without driver
- Active security system: arm lock for rollover risk

OPTIONAL EQUIPMENT

- Auxiliary hydraulic port
- Semi-closed cabin
- Closed cabin
- Load guard
- Lighting equipment
- Working light
- Bucket 300 lt

AUSA reserves the right to make any changes in the specifications without prior notice.